

ICP DAS
WISE-284x Utility
Quick Start
[Version 1.0.0 - 2022/10/20]



泓格科技
ICP DAS CO., LTD.

Warning

The information furnished by ICP DAS Co. Ltd. (hereinafter “ICP DAS”) is accurate and reliable to ICP DAS’s best knowledge. ICP DAS reserves the right to change the content of this manual at any time without notice.

ICP DAS cannot guarantee that this controller is free of any actual or legal defects (including but not limited to stability, reliability, accuracy, completeness, validity, suitability for a specific purpose, security related defects, errors or bugs, infringement of rights etc.). ICP DAS shall not be responsible for any damages inflicted upon users in relation to the use of the controller.

Copyright and Trademark Information

© Copyright 2022 by ICPDAS Inc., LTD. All rights reserved worldwide.

Trademark of Other Companies

The names used for identification only maybe registered trademarks of their respective companies.

License

The user can use, modify and backup this software on a single machine. The user may not reproduce, transfer or distribute this software, or any copy, in whole or in part.

Table of Contents

| | | |
|-------|---|----|
| 1 | Software Description | 1 |
| 2 | Before Software Installation | 2 |
| 3 | Software Installation | 3 |
| 4 | Software Function Introduction | 5 |
| 4.1 | Tool Bar | 5 |
| 4.1.1 | Changing Display Language..... | 5 |
| 4.2 | Scan List..... | 6 |
| 4.2.1 | Scan WISE and Show in The Scan List..... | 6 |
| 4.2.2 | Add WISE to The Setting List | 6 |
| 4.3 | Setting List | 7 |
| 4.3.1 | Load Setting List / Save Setting List | 7 |
| 4.3.2 | Remove WISE from The Setting List | 8 |
| 4.3.3 | Manually Add WISE to The Setting List | 8 |
| 4.4 | Setting Functions | 8 |
| 4.4.1 | Firmware Update | 8 |
| 4.4.2 | Setting File Update / Backup | 9 |
| 4.4.3 | The Progress and Status of Setting Functions..... | 10 |

1 Software Description

This document is intended to provide guidelines for ICP DAS WISE-284x Utility software tool. This software tool has to be installed on PC and it enables to perform the following functions on WISE-284x series controllers via Ethernet :

- (1) Firmware Update
- (2) Setting File Update and Backup
 - Backup Setting File from WISE to Local PC
 - Update WISE Setting File from Local PC to WISE
 - Update Setting File from One Specific WISE to Other WISE
 - Backup Debug File

Please refer to the following chapter for more detail.

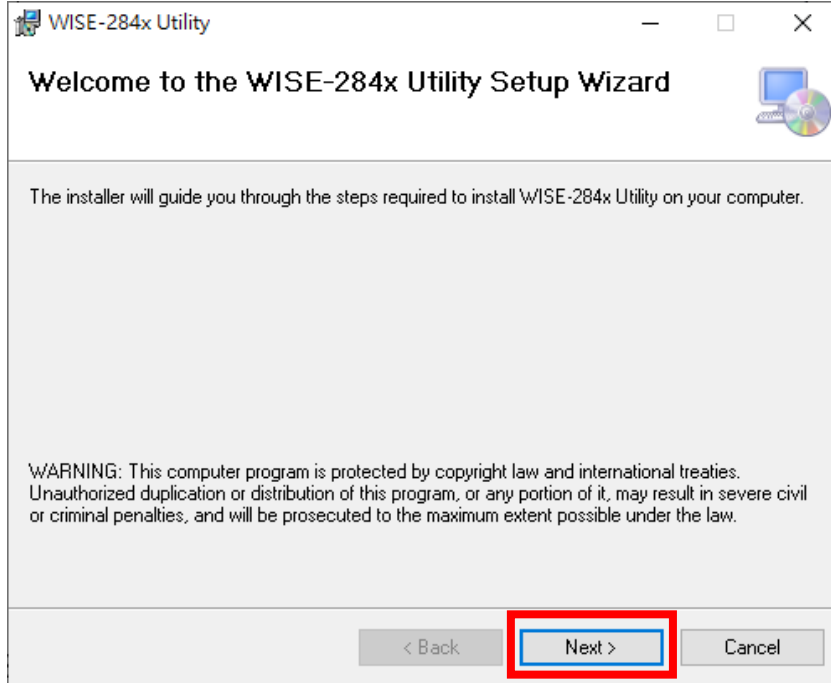
2 Before Software Installation

Before installing ICP DAS WISE-284x Utility, please finishing installation of the WISE-284x hardware, and make sure all wiring connections are accurate (e.g., please refer to the user manual of WISE-284x). The WISE-284x Utility requires the Microsoft .NET Framework version 4.6.2 (or above version) to be installed on the target computer. Please follow the link below to get the framework package directly from Microsoft, if required.

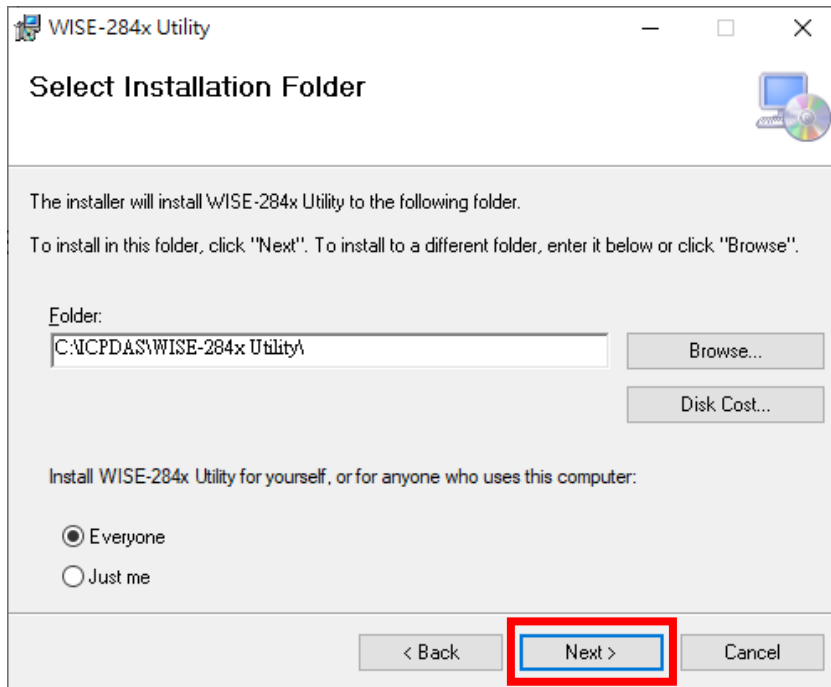
- Download Microsoft .NET Framework:
<https://dotnet.microsoft.com/en-us/download/dotnet-framework>

3 Software Installation

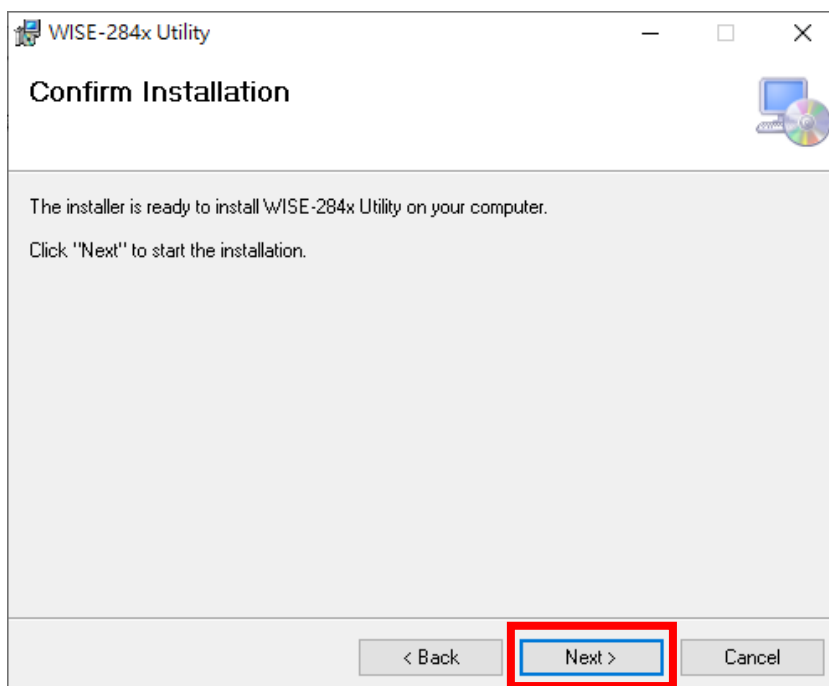
Please contact ICP DAS service or visit ICP DAS WISE web site to obtain the latest version of the ICP DAS WISE-284x Utility installer. Double click the ICP DAS WISE-284x Utility installer to run the installation. Click [Next] to continue.



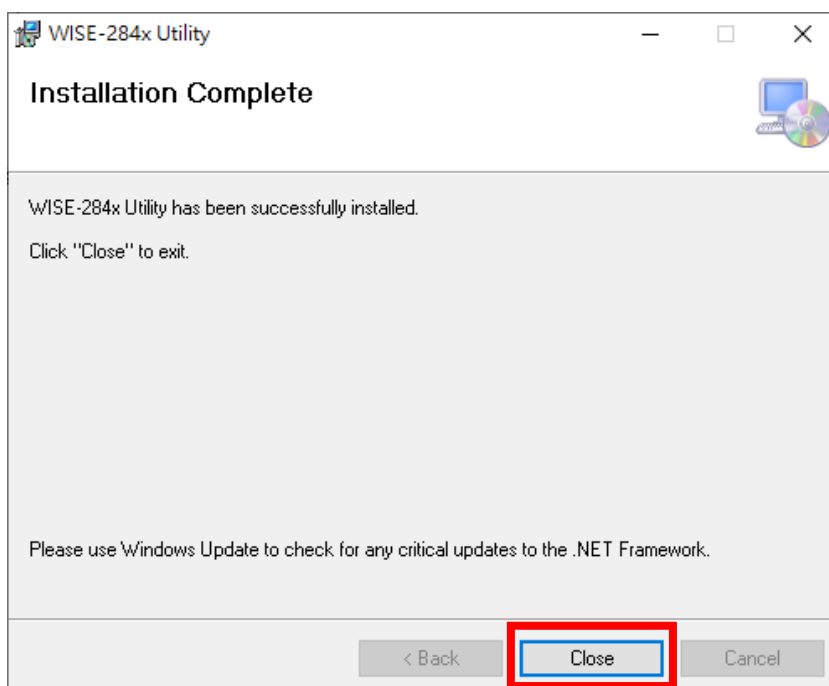
On [Select Installation Folder] page, input path or browse through file dialog box to select the destination folder and select the software user option, click [Next] to continue.



Make sure the settings are accurate. Click [Next] to start the installation.



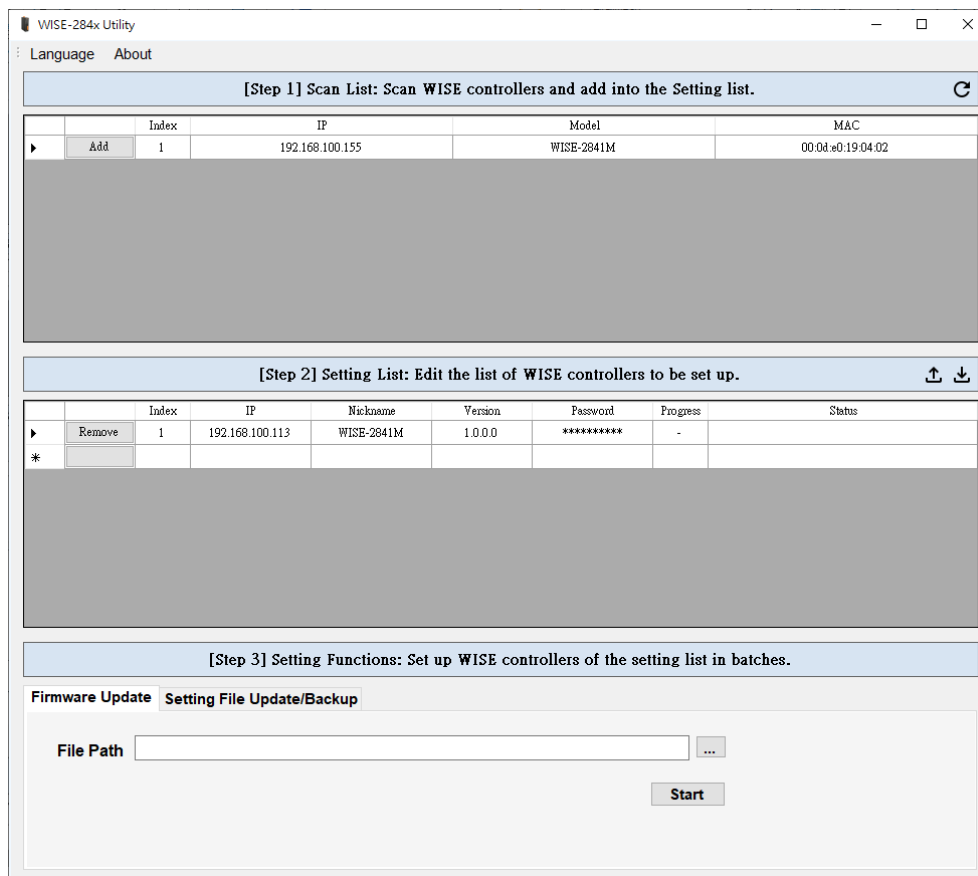
When the installation process is completed, click [Close] to finish installing program.



After the installation is completed, you will find the WISE-284x Utility Shortcut on the desktop.

4 Software Function Introduction

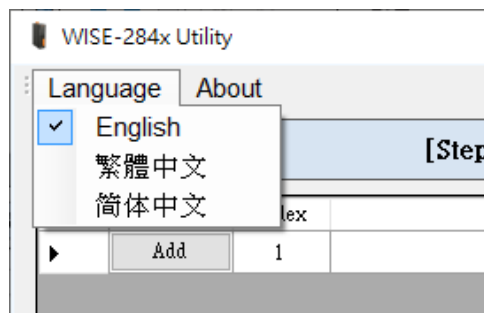
Please refer to the following sections for more detailed information of WISE-284x Utility software tool interface and functions:



4.1 Tool Bar

4.1.1 Changing Display Language

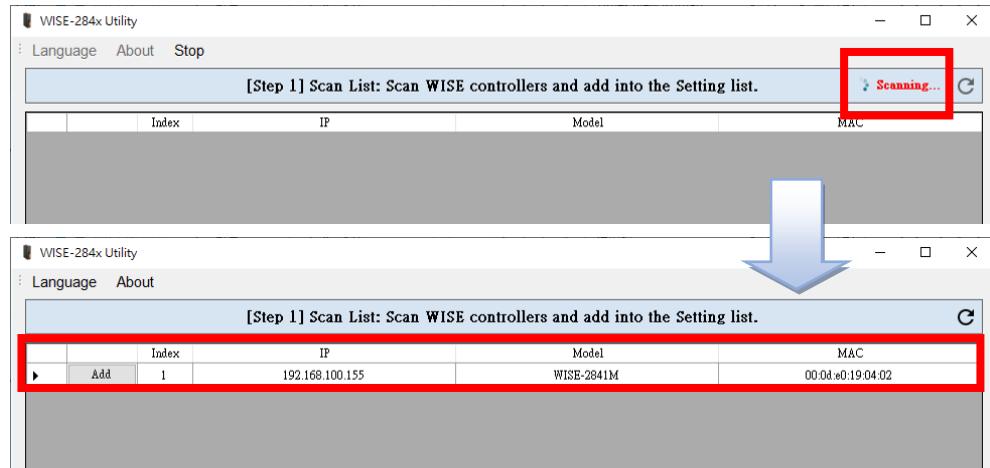
The user can click [Language] to change display language.




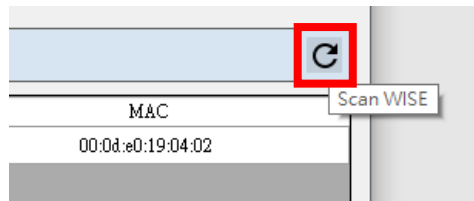
4.2 Scan List

4.2.1 Scan WISE and Show in The Scan List

After starting the software, the software will automatically scan the existed WISE-284x controllers under the same domain. After scanning operation is finished, the WISE-284x controllers will be displayed in the scan list.

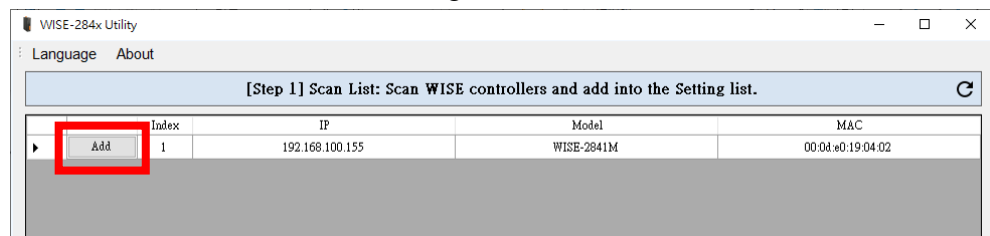


The user can click  button and perform [Scan WISE] function again to scan the controllers.

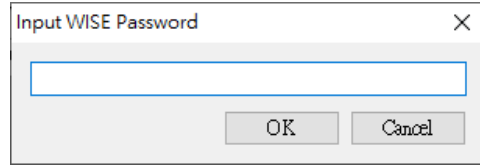


4.2.2 Add WISE to The Setting List

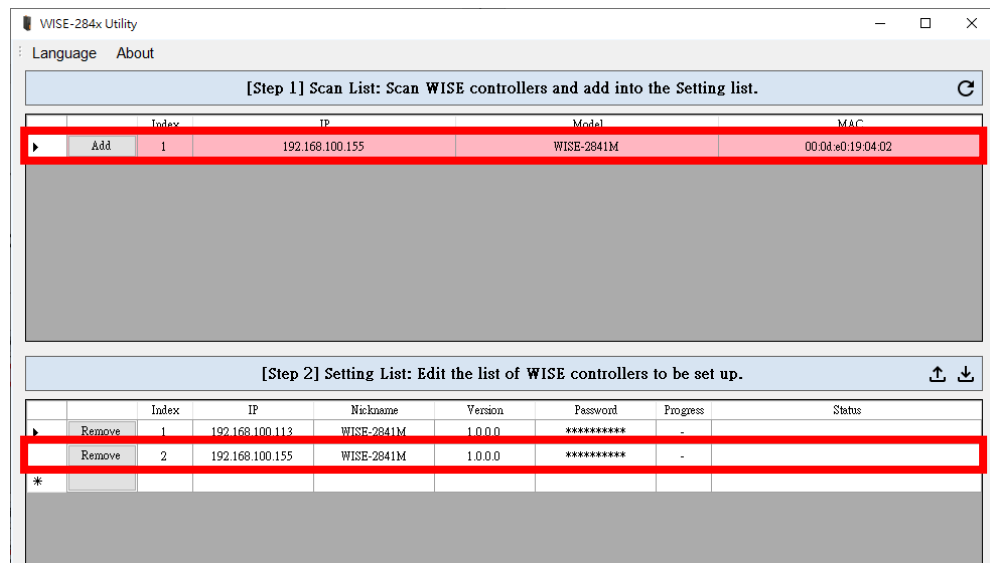
The user can click [Add] button in the scan list to add the WISE-284x controller to be added to the setting list.



After clicking the [Add] button, the [Input WISE Password] windows will pop up. Please enter the administrator password of the WISE-284x controller.


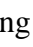


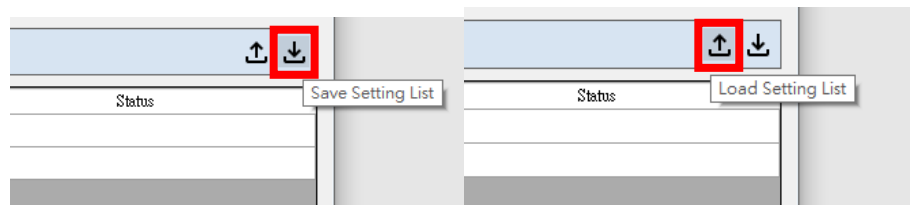
The background color of the controllers in the scan list that have been added to the setting list will be showed in red.



4.3 Setting List

4.3.1 Load Setting List / Save Setting List

The user can click  button and perform [Save Setting List] function to save current setting list, then can click  button to perform [Load Setting List] function to reload the different setting list.



Please note: After performing [Load List File] function, the original setting list will be replaced by the newly loaded setting list.

4.3.2 Remove WISE from The Setting List

The user can click [Remove] button in the setting list to remove the WISE-284x controller from the setting list.

| [Step 2] Setting List: Edit the list of WISE controllers to be set up. | | | | | | | | |
|--|--------|-------|-----------------|------------|---------|----------|----------|--------|
| | | Index | IP | Nickname | Version | Password | Progress | Status |
| ▶ | Remove | 1 | 192.168.100.113 | WISE-2841M | 1.0.0.0 | ***** | - | |
| | Remove | 2 | 192.168.100.155 | WISE-2841M | 1.0.0.0 | ***** | - | |
| * | | | | | | | | |

4.3.3 Manually Add WISE to The Setting List

The user can manually enter the IP address of the WISE-284x controller in the IP field at the last column of the setting list to add that controller to the setting list.

| [Step 2] Setting List: Edit the list of WISE controllers to be set up. | | | | | | | | |
|--|--------|-------|-----------------|------------|---------|----------|----------|--------|
| | | Index | IP | Nickname | Version | Password | Progress | Status |
| | Remove | 1 | 192.168.100.113 | WISE-2841M | 1.0.0.0 | ***** | - | |
| | Remove | 2 | 192.168.100.155 | WISE-2841M | 1.0.0.0 | ***** | - | |
| ⊕ | Remove | 3 | 192.168.100.60 | - | - | | | |
| * | | | | | | | | |

4.4 Setting Functions

4.4.1 Firmware Update

The user can use [Firmware Update] function to update the firmware on multiple WISE-284x controllers at the same time. Please select the firmware file path and click [Start] button to start the firmware update operation.

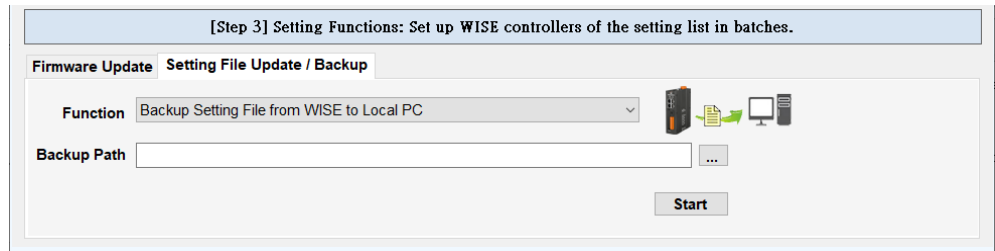
| [Step 3] Setting Functions: Set up WISE controllers of the setting list in batches. | |
|---|--------------------------------------|
| Firmware Update | Setting File Update/Backup |
| File Path | <input type="text"/> ... |
| | <input type="button" value="Start"/> |

4.4.2 Setting File Update/Backup

Setting File Update/Backup includes four functions:

- **Backup Setting File from WISE to Local PC**

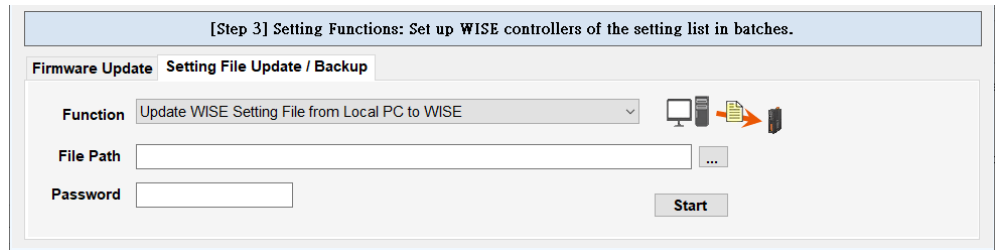
The user can use [Backup Setting File from WISE to Local PC] function to backup the WISE setting file from WISE-284x controller to local PC.



Backup Path: Please select the backup path to save the setting file to the local PC.

- **Update WISE Setting File from Local PC to WISE**

The user can use [Update WISE Setting File from Local PC to WISE] function to update setting file to multiple WISE-284x controllers from the local PC.

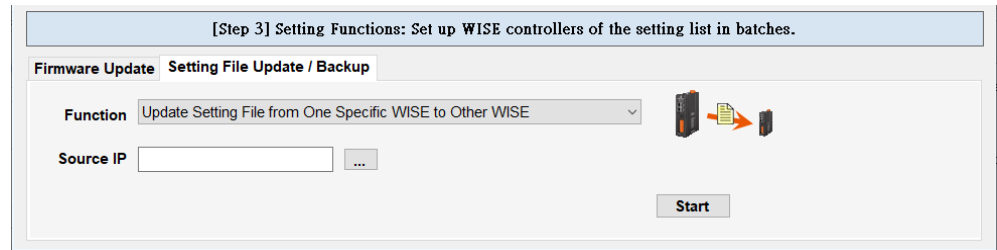


File Path: Please select the path of the setting file to be updated from the local PC.

Password: The administrator password for the controller from which this setting file was backed up.

● **Update Setting File from One Specific WISE to Other WISE**

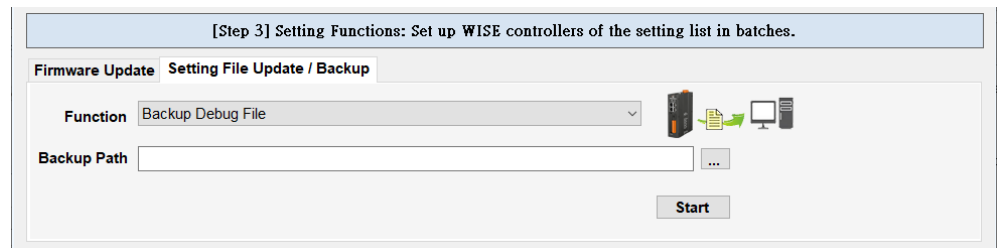
The user can use [Update Setting File from One Specific WISE to Other WISE] function to update the setting file from one specific WISE-284x controller to other multiple WISE-284x controllers.



Source IP: Please select the source WISE controller IP address for the setting file update operation.

● **Backup Debug File**

When the user encounters difficulty in settings and would like to send back the settings to ICP DAS for debug or analysis, please use this function to backup the debug file to the local PC and send this file to ICP DAS.



Backup Path: Please select the backup path to save the debug file to the local PC.

4.4.3 The Progress and Status of Setting Functions

For the execution progress and status of all the above setting functions, the user can view the current execution progress and status in the Progress and Status fields in the setting list.

| [Step 2] Setting List: Edit the list of WISE controllers to be set up. | | | | | | | | |
|--|--|-------|-----------------|------------|---------|----------|----------|-----------------------------------|
| | | Index | IP | Nickname | Version | Password | Progress | Status |
| Remove | | 1 | 192.168.100.155 | WISE-2841M | 1.0.0.0 | ***** | 100 % | [Error] Incorrect password. |
| Remove | | 2 | 192.168.100.113 | WISE-2841M | 1.0.0.0 | ***** | 100 % | Backup setting file successfully. |
| Remove | | 3 | 192.168.100.98 | WISE-2841M | 1.0.0.0 | ***** | 100 % | [Error] Admin is already login. |
| »» | | | | | | | | |